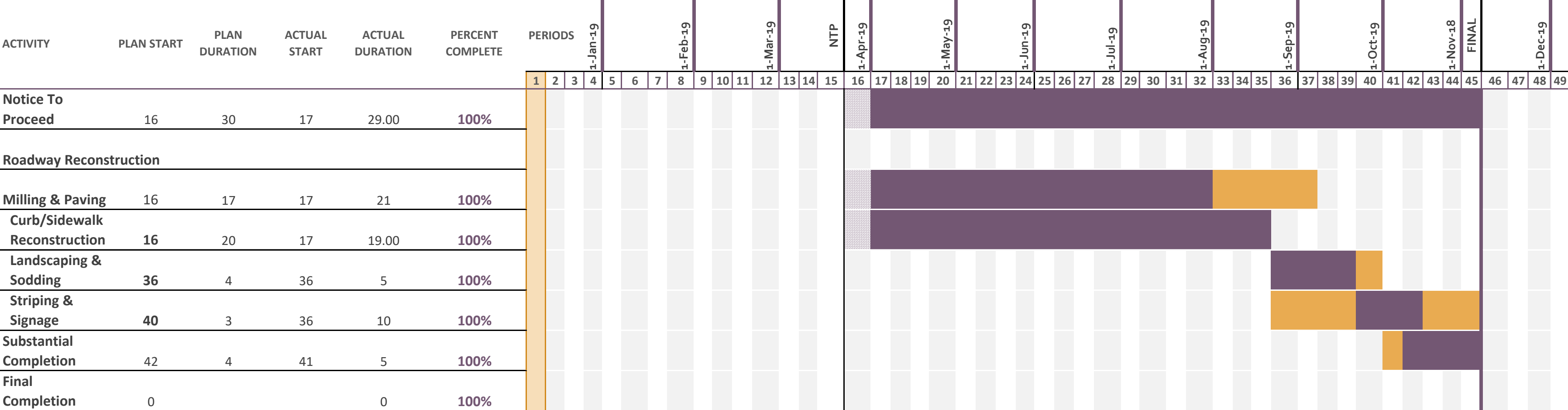


# District 2 Year 3 Roadway Project

Select a period to highlight at right. A legend describing the charting follows.

Period Highlight: 1 Plan Duration Actual Start % Complete Actual (beyond Plan) % Complete (beyond plan)



**PROJECT COMPLETE**

Roadway segments in project:

- N. E St. (Lucerne Ave. to 10th Ave. N.)
- 7th Ave. N. (N. A St. to I-95 dead end)
- Lavue Ave. (N. A St. to I-95 dead end)
- 19th Ave. N. (N. A st. to west end)
- 22nd Ave. N., N. A St. to 435 ft. east of N. D St.
- N. D St., 19th Ave. N. to 22nd Ave. N.

Updated: 10/8/2019