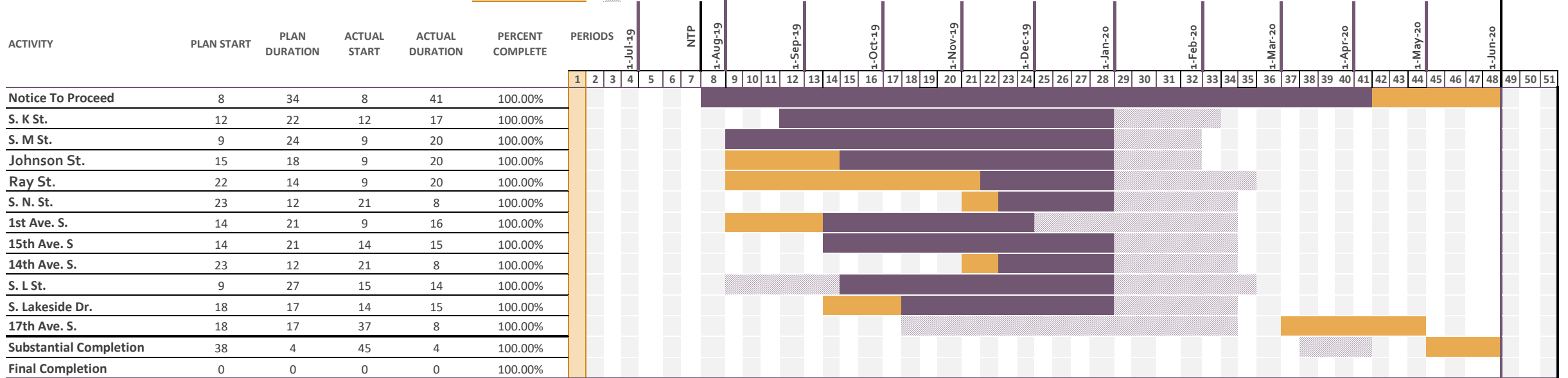


District 4 Year 3&4 Project

Select a period to highlight at right. A legend describing the charting follows.

Period Highlight: 1 Plan Duration Actual Start % Complete Actual (beyond Plan) % Complete (beyond plan)



Roadway segments in project:

- S. K St. (Lake Ave. to 3rd Ave. S.)
- S. M St. (Lake Ave. to 1st Ave. S.)
- Johnson St.
- Ray St.
- S. N. St. (13th Ave. S. to South Dead End)
- 1st Ave. S. (S. J St. to S. M St.)
- 15th Ave. S. (S. Lakeside Dr. to S. M St.)
- 14th Ave. S. (S. Lakeside Dr. to S. Palmway)
- S. L St. (Lake Ave. to 3rd Ave. S.)
- S. Lakeside Dr. (15th Ave. S. to Lakeside Palms Ct.)
- 17th Ave. S. at S. Lakeside Dr. and at Intracoastal Way

Updated: 6/1/2020

PROJECT COMPLETE